

January 12, 2010 EVALUATION SHEET RESULTS

Speaker: Ray Barger

No. of Evaluation Sheets turned in:

23

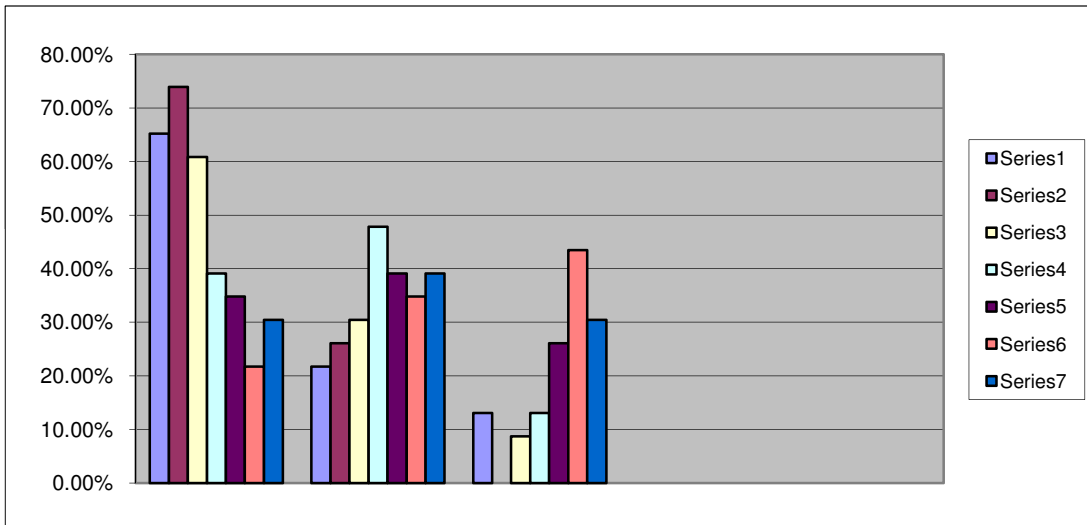
People in attendance

Excellent: 5, Good: 4, Average: 3, Fair: 2, Poor: 1

	Rating Scale	5	4	3	2	1	Total
1. Speaker		15	5	3	0	0	23
2. Topic		17	6	0	0	0	23
3. Content		14	7	2	0	0	23
4. Location		9	11	3	0	0	23
5. Room		8	9	6	0	0	23
6. Food		5	8	10	0	0	23
7. Service		7	9	7	0	0	23

Excellent: 5, Good: 4, Average: 3, Fair: 2, Poor: 1

1. Speaker	65%	22%	13%	0%	0%
2. Topic	74%	26%	0%	0%	0%
3. Content	61%	30%	9%	0%	0%
4. Location	39%	48%	13%	0%	0%
5. Room	35%	39%	26%	0%	0%
6. Food	22%	35%	43%	0%	0%
7. Service	30%	39%	30%	0%	0%



	East	South	Central	North
I live in:	4	1	6	12
I work in:	2	4	6	11

Where would you prefer to have our monthly meetings?

Varied Locations within SD County, Butcher Shop, This location is great for both so and no residents, a little further south, this location is difficult with traffic, Double tree is good, Carlsbad Encinitas in teh West North County Area, North County Coastal, This place is just fine

What other subjects are you interested in hearing about?

Import/Export, Demand Planning, Contract MAnagement, Supply Chain Strategy for Service Parts and Providers, Supplier Audits, Contract Management, Negotiating with little leverage, Vendor management inventories, Buyer Development, 2 bin material replacement, Indirect Spend, Sourcing Services.

Are you interested in becoming a member?

